

Experience

Auditions for production
Market research and pitches for Enterprise Project

Audience / Purpose / Product:

Production of Rapunzel and the Barbershop Bros
Enterprise Project
Games at Summer Sports Evening

English:

Writing Outcome:

- A range of writing genres to demonstrate the areas shown below.

Key focuses:

- Write effectively for a range of purposes and audiences, selecting language that shows good awareness of the reader
- In narratives, describe settings, characters and atmosphere and integrate dialogue to convey character and advance the action
- Select vocabulary and grammatical structures that reflect what the writing requires (e.g. using contracted forms in dialogues in narrative; using passive verbs to affect how information is presented; using modal verbs to suggest degrees of possibility)
- Use a range of devices to build cohesion (e.g. conjunctions, adverbials of time and place, pronouns, synonyms) within and across paragraphs
- Use verb tenses consistently and correctly throughout their writing
- Use a range of punctuation
- Maintain legibility in joined handwriting when writing at speed
- Spell correctly most words from the year 3 /year 4 and year 5 / year 6 spelling list and use a dictionary to check the spelling of uncommon or more ambitious vocabulary

Vocabulary:

heart, pulse, lungs, arteries, veins, capillaries, red blood cells, white blood cells, circulatory system

nutrients, nutrition, digestive system

enterprise, business, entrepreneur, pitch, profit, expenses,

Music:

We will focus on singing as part of our Y6 production of Rapunzel and the Barbershop Bros.

Science:

Animals including humans

Name and describe the function of the human circulatory system. Describe the way nutrients and water are transported within animals. Recognise the impact of diet, exercise, drugs and lifestyle on the way their bodies function.

Art and Design & Technology:

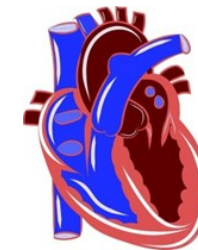
- Design tickets and programmes for production of Rapunzel and the Barbershop Bros.
- Create and develop a product for sale as part of the Enterprise Project.
- Create a business logo.
- Produce advertising posters for the Enterprise Project.

Maths:

We will focus on key areas of maths which will support our transition to secondary school. Outcomes include:

- Solve problems involving ratio relationships.
- Solve problems with 2 unknowns.
- Pupils explain how and why scaling is used to make and interpret maps
- Pupils identify and describe the relationship between two shapes using scale factors and ratios
- Pupils explain how to balance equations with addition or subtraction expressions
- Pupils use their knowledge of balancing equations to solve problems
- Pupils compare the structure of problems with one or two unknowns
- Pupils explain the values a part-whole model could represent
- Pupils solve problems with two unknowns in a range of contexts
- Pupils explain how addition and subtraction can help to solve multiplication problems efficiently
- Pupils use their knowledge of the distributive law to solve equations including multiplication, addition and subtraction
- Pupils explain the relationship between the mean and sharing equally
- Pupils explain how to calculate the mean when one of the values in the data set is zero or missing
- Pupils explain how to use the mean to make comparisons between two sets of information
- Begin to learn how to use a calculator.

How will we grow ?



School Value Trust

We will take part in a variety of activities to help us to grow. These include:

- Enterprise Project —produce a business plan for a product; carry out market research; pitch the business; understand sales, expenses, profit and loss; sell the product to customers and keep accounts.
- Y6 Production of Rapunzel and the Barbershop Bros through which we will continue to develop our oracy skills
- Being part of our community by developing games for the PTFA Summer Sports Evening to help raise money for the school

Computing:

3D Modelling

This unit explores 3D Modelling design using the CAD software, 2Design and Make, on Purple Mash. It guides children to create, refine and evaluate models with creativity and purpose.

French:

In French we will recap key vocabulary and continue to develop speaking and listening skills. We will look at the days of the week, months of the year, counting, colours, family, body parts and how to ask and answer questions.

Religious Education:

What do Christians believe about Agape?

RSHE:

SCARF—Growing and Changing including Relationships and Sex Education

Physical Education:

Real PE—Physical
Athletics, Crickets and Rounders