

Rockwell Green Primary School - Summer Two - Curriculum Planning— Woodpeckers

Initial Hook / Wow:
Developing business ideas



Experience / Opportunity:
Pitching a business idea



Audience / Purpose / Product:
Create a product and sell it.

English:

Theme:
We will be linking English with our topic How will we grow ? using 'Pig Heart Boy' by Malorie Blackman and 'Illumanatomy' by Kate Davies as our inspiration.

Writing Outcomes:

- Balanced argument
- Narrative
- Poetry

Key grammar focus:

- Use the correct verb tense
- Use adverbials such as on the other hand, in contrast, or as a consequence
- Understand the difference between vocabulary typical of informal speech and vocabulary appropriate for formal speech and writing [for example, find out – discover; ask for – request; go in – enter]

Punctuation

- Use a range of punctuation precisely - capital letters and full stops; exclamation marks and question marks; commas, brackets and dashes; colons and semi-colons

Remote Learning:

<https://classroom.thenational.academy/units/healthy-food-persuasive-writing-2b8f>

<https://classroom.thenational.academy/units/school-uniform-persuasive-writing-4ef1>

Vocabulary:

transplant, pioneering, controversial, xenotransplantation
heart, pulse, lungs, arteries, veins, capillaries, red blood cells, white blood cells, circulatory system
nutrients, nutrition, digestive system
enterprise, business, entrepreneur, pitch, profit, expenses, loss

Music:

We will consolidate all our learning in music from this year by revisiting elements from each unit.

Remote Learning: Yumu— All units from this year
<https://www.somersetonline.com/site/log-in/>

Science:

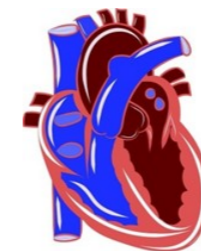
Animals including humans
Name and describe the function of the human circulatory system. Describe the way nutrients and water are transported within animals. Recognise the impact of diet, exercise, drugs and lifestyle on the way their bodies function

Remote Learning: (Year 6) -
<https://classroom.thenational.academy/units/human-anatomy-f968>

Art and Design & Technology:

We will look at the work of Leonardo da Vinci. Who he was and what he was famous for during the Renaissance. We will explore his portrait and religious paintings including use of perspective and composition and his drawing techniques. We will also look at inventions designed by him.

How will we grow ?



School Value
Truthfulness

Learning Behaviour
Curiosity

Enterprise:

- Produce a business plan for an environmentally friendly product
- Carry out market research
- Pitch the business
- Understand sales, expenses, profit and loss
- Produce the product
- Create a logo and advertise a product
- Sell product to customers

Computing:

Handling data—Excel spread sheets linked to Science and Enterprise.

Remote Learning:
<https://classroom.thenational.academy/units/spreadsheets-ecb4>

French:

Salut — Actions.
We will learn how to describe what we are doing (looking, singing, dancing) and where (in the cupboard, under, behind).

Remote learning:
<https://classroom.thenational.academy/units/jemhabille-4064>

Maths:

Fractions

- Recognise when fractions can be simplified, and use common factors to simplify fractions.
- Express fractions in a common denomination and use this to compare fractions that are similar in value.
- Compare fractions with different denominators, including fractions greater than 1, using reasoning, and choose between reasoning and common denomination as a comparison strategy.

Geometry—Properties of shape

- Draw 2-D shapes using given dimensions and angles
- Recognise, describe and build simple 3-D shapes, including making nets
- Compare and classify geometric shapes based on their properties and sizes and find unknown angles in any triangles, quadrilaterals, and regular polygons
- Illustrate and name parts of circles, including radius, diameter and circumference and know that the diameter is twice the radius
- Recognise angles where they meet at a point, are on a straight line, or are vertically opposite, and find missing angles.

Statistics

- Interpret and construct pie charts and line graphs and use these to solve problems
- Calculate and interpret the mean as an average.

Remote Learning:

<https://classroom.thenational.academy/units/fractions-ed51>
<https://classroom.thenational.academy/units/angles-and-shape-2e85>
<https://classroom.thenational.academy/units/line-graphs-and-timetables-d842>

Religious Education:

Christianity—Agape

Remote Learning: Christianity

<https://classroom.thenational.academy/units/christianity-90fd>

PSHE:

SCARF—Growing and Changing including Relationships and Sex Education

Physical Education:

Forest School and Striking and Fielding

Remote learning:
<https://real.jasmineactive.com/login>