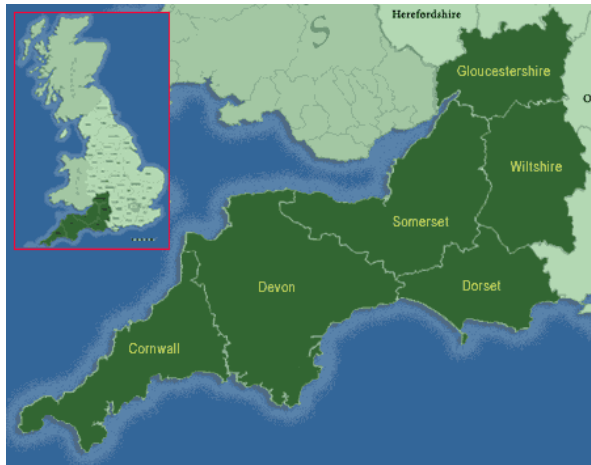


## Knowledge organiser: Year A Geography Year 3 and 4 Let's go on a Southwest staycation!

The south-west region of England is part of the United Kingdom and is made up of the counties of Gloucestershire, Bristol, Wiltshire, Somerset, Dorset, Devon and Cornwall, as well as the Isles of Scilly. United Kingdom: England, Northern Ireland, Scotland and Wales

The United Kingdom is part of the continent of Europe.



### Key vocabulary:

**Coastline**- where land meets water

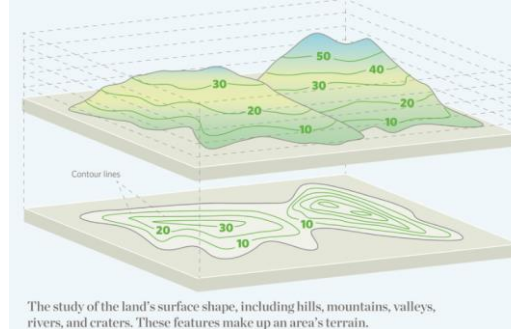
**Elevation**- distance above sea level

**Relief**-how land changes in height

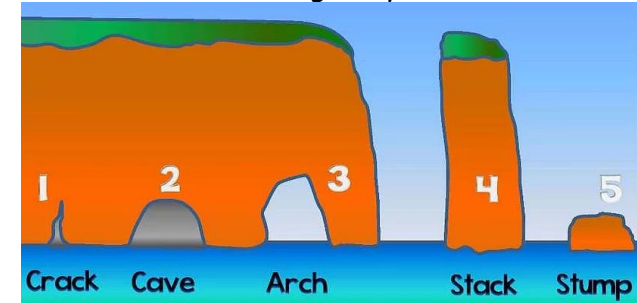
**Cross section**-like a slice

**Topography**- surface features of the land

**Contour lines** -show land height on a map

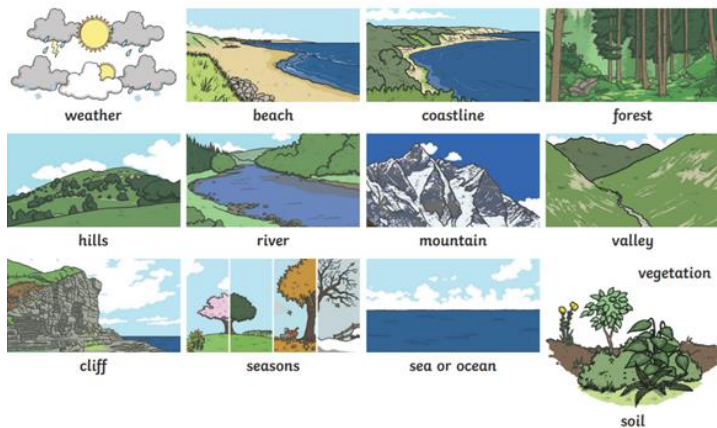


### Erosion- wearing away of the land



- 1 Waves attack rock face using hydraulic action and abrasion. Crack is formed.
- 2 Over time, crack is enlarged to form cave.
- 3 Cave is widened and deepened and pushes through the headland to form a natural arch.
- 4 Undercutting and weathering lead arch to collapse leaving a stack.
- 5 Weathering and erosion wear stack down to a stump.

### Physical geography



### Human geography

