

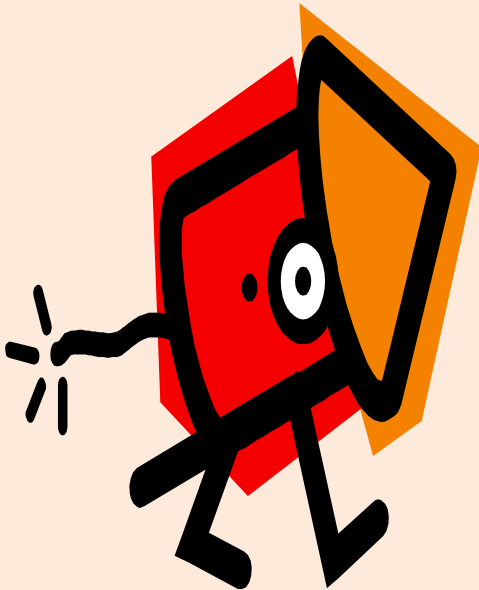
# Relative pronouns

- A relative pronoun is a word which is used to refer back to nouns which have already been mentioned in the sentence.
- Relative pronouns can describe people, things (including animals), places and abstract ideas.
- They can also be used to join two parts of a complex sentence, using [relative clauses](#).



Relative pronouns are words like:

who  
which  
where  
why  
whose  
that



Write this  
heading and  
the words  
in your  
literacy  
book.



- Who- Referring to people.
- Which- Referring to things.
- When- Referring to a time or time period.
- Where- Referring to a place.
- Whose- The possessive form of 'who'.
- That- Can be used to refer to people or things.
- These [pronouns](#) are usually used in the middle of sentences to join two [clauses](#) together. Here are a few examples of relative pronouns used in sentences.

*“Joe, **who** was dressed as a cowboy, was excited about his friend’s fancy dress party.”*

# To use relative pronouns

Here is a list of relative pronouns. Can you place them in two categories?

**that, who, whom, which, whose**

Animals and Objects	Humans

# Answers

Objects and animals	Humans
That	Whose
which	Who
	whom

# Can you identify the relative pronouns in these sentences?

1. Who is the unusual lady with the brown fuzzy hat?
2. The teacher, whose hair was turning grey, tried not to laugh.
3. The cat that sat on the mat.
4. The girl, with whom the queen spoke, was very polite.
5. Under the bridge, which had just been rebuilt, lived a troll.

## Extension

Try to write your own sentences using relative pronouns.



# Answers

1. **Who** is the unusual lady with the brown fuzzy hat?
2. The teacher, **whose** hair was turning grey, tried not to laugh.
3. The cat **that** sat on the mat.
4. The girl, with **whom** the queen spoke, was very polite.
5. Under the bridge, **which** had just been rebuilt, lived a troll.

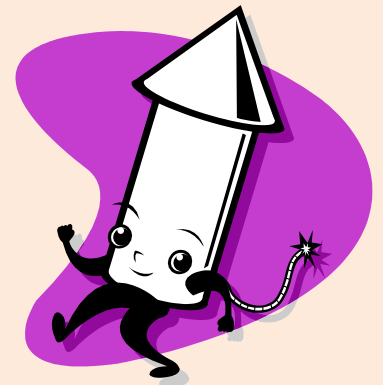
Insert - 'that', 'whose', 'which', 'who',  
'us' or 'we' into these sentences.

1. I have a new friend \_\_\_\_\_ lives down the next street.
2. This is the shop \_\_\_\_\_ sells the best carrots.
3. That's the lady \_\_\_\_\_ sister works at Tesco.
4. Jackie owns the horse \_\_\_\_\_ has the blue saddle.



# Answers

1. I have a new friend **who** lives down the next street.
2. This is the shop **which** sells the best carrots.
3. That's the lady **whose** sister works at Tesco.
4. Jackie owns the horse **that** has the blue saddle.



## Introduction

Match the following:

Relative  
pronoun

The cat with the very long whiskers is mine.

Personal  
pronoun

Paulo, who had been training for months, finished first in the race.

Possessive  
pronoun

Suddenly, she realized she had left the whole project at home.

## Introduction

Match the following:

Relative  
pronoun

The cat with the very long whiskers is mine.

Personal  
pronoun

Paulo, who had been training for months, finished first in the race.

Possessive  
pronoun

Suddenly, she realized she had left the whole project at home.

Varied Fluency 1

Circle the relative pronoun.

theirs

his

which

Varied Fluency 1

Circle the relative pronoun.

theirs

his

which

## Varied Fluency 2

Underline the relative pronoun in the sentence below.

**My class, which is the best at lining up, gets lots of awards.**

## Varied Fluency 2

Underline the relative pronoun in the sentence below.

My class, which is the best at lining up, gets lots of awards.

### Varied Fluency 3

Add the most suitable relative pronoun to the sentence below.

that

which

who

The girl \_\_\_\_\_ lives next door is 10 years old.



### Varied Fluency 3

Add the most suitable relative pronoun to the sentence below.

that

which

who

The girl who lives next door is 10 years old.

## Varied Fluency 4

Match the phrases to the most suitable relative pronoun.

whose

we first met

where

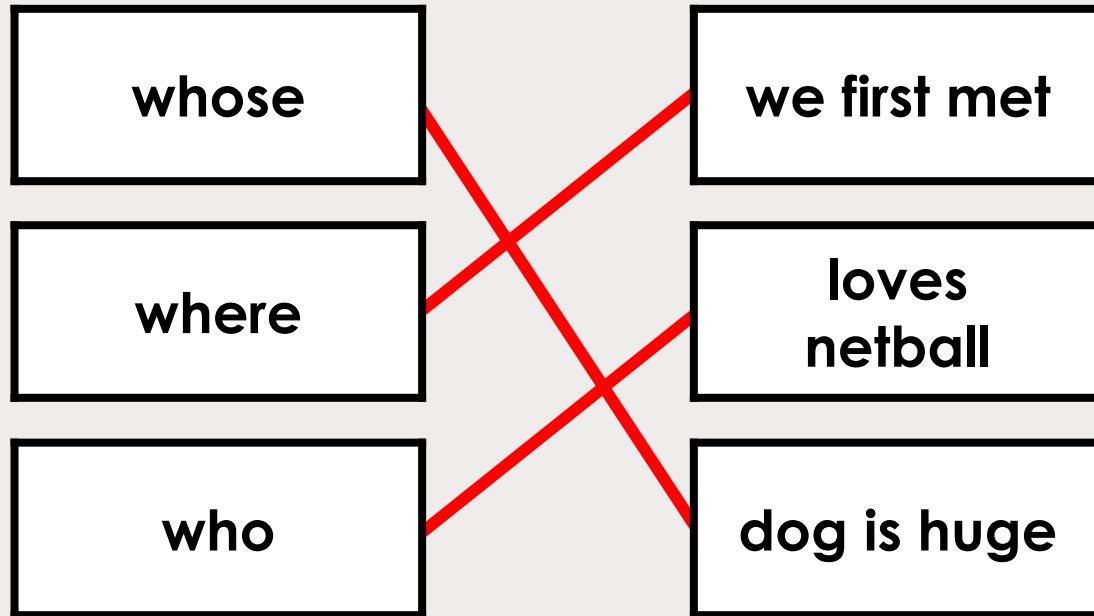
loves  
netball

who

dog is huge

## Varied Fluency 4

Match the phrases to the most suitable relative pronoun.



## Application 1

Combine the sentence parts below using the relative pronouns to create 2 full sentences.

**we saw the girl**

**had escaped from his lead**

**Sean helped the dog**

**lives in the cottage**

**who**

**that**

## Application 1

Combine the sentence parts below using the relative pronouns to create 2 full sentences.

we saw the girl

had escaped from his lead

Sean helped the dog

lives in the cottage

who

that

We saw the girl who lives in the cottage.

Sean helped the dog that had escaped from the garden.

# Tasks

- 1) Copy and complete worksheet 1. Add some of your own sentences if you complete quickly.
- 2) Look at worksheet 2 and decide which relative pronoun fits the sentence (no need to copy).