

Spelling 07.01.21 LO Prefixes 'sub-' and 'tele-'

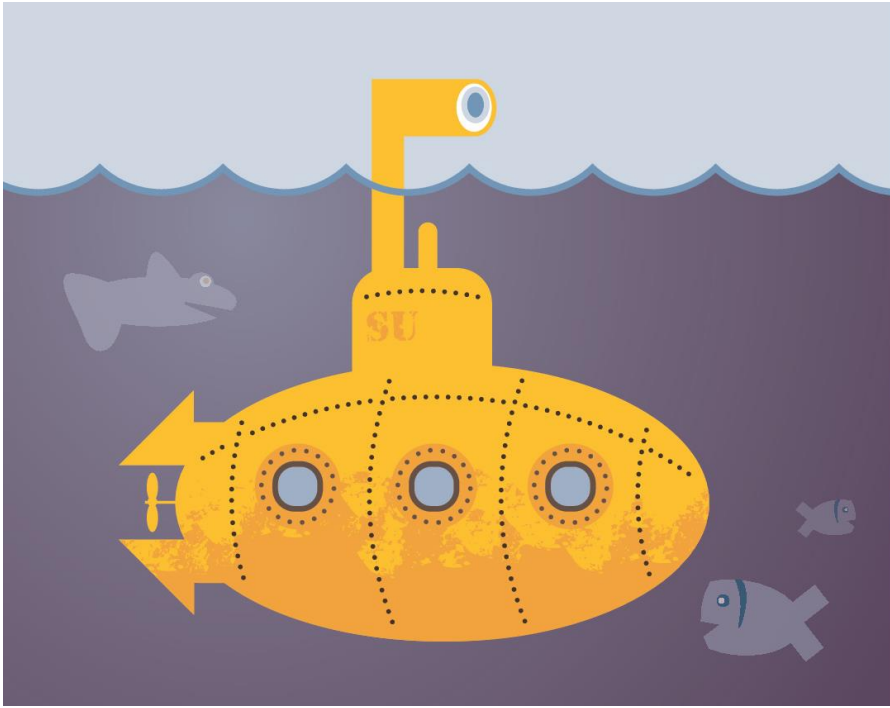
Today we will be looking at the prefixes 'sub-' and 'tele-'.

What new words can you create using the words and prefixes below? Create a list and add a picture for each.

| | | | |
|--------------|-----------------|--------------|------------------|
| tele | tele | tele | tele |
| sub | sub | sub | sub |
| phone | graph | scope | vision |
| photo | marine | way | terranean |
| merge | ordinate | | soil |

What do you think each prefix means? When you have had a think check your answer on the next page

'Sub-' means 'underneath'.



'Tele-' means 'at a distance' or 'long distance'.

